

VILLAS ON THE GREEN

AT WOODGATE



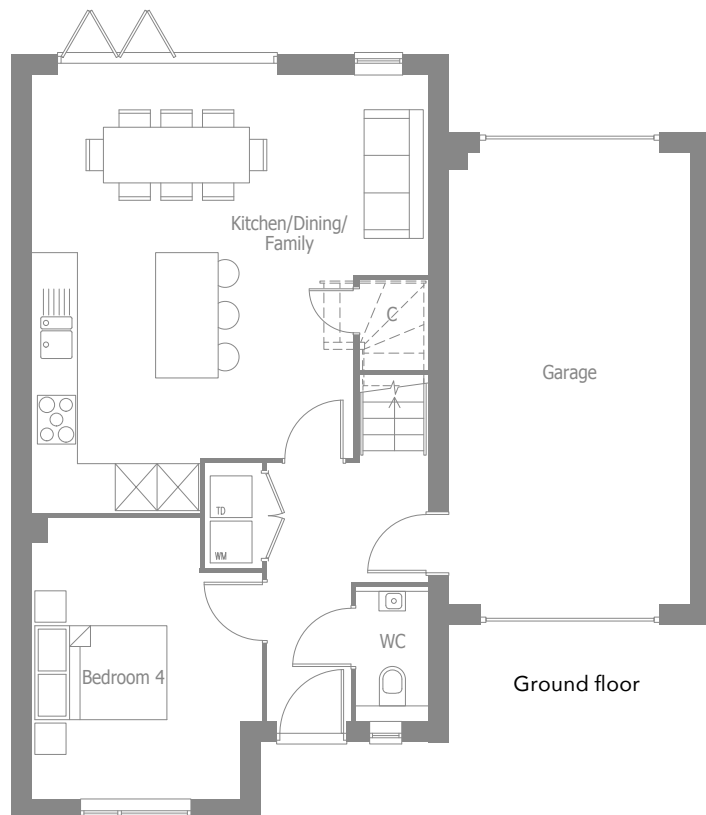
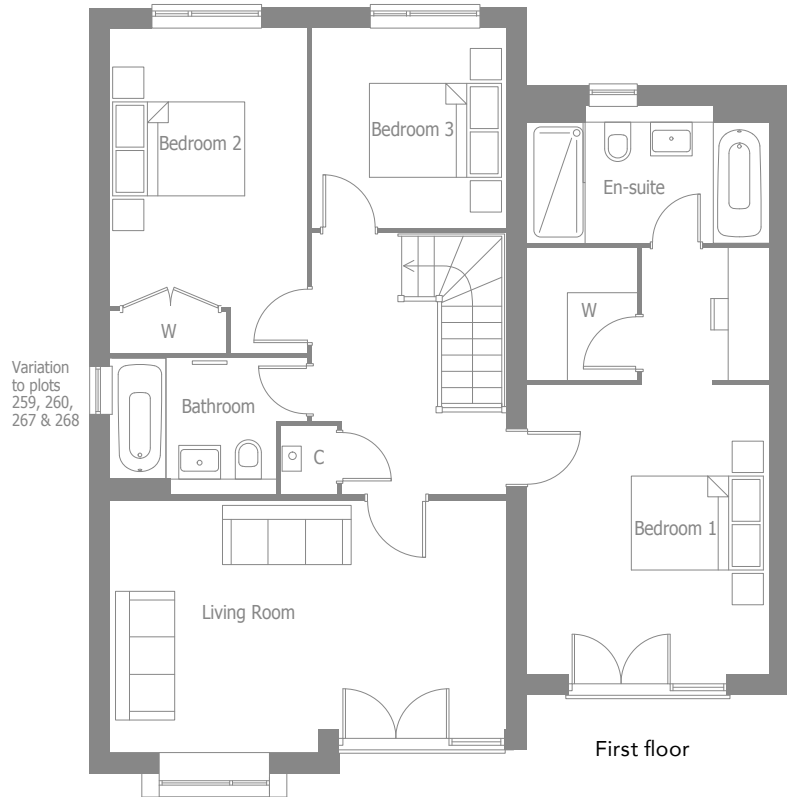
Style One

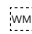
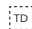
Numbers 258, 259, 260, 261, 262,
265, 266, 267, 268, 269 & 270



THAKEHAM

- Living Room**
5.64m x 3.61m 18'6" x 11'10"
- Bedroom 1**
6.09m x 3.43m 20'0" x 11'3"
- Bedroom 2**
4.63m x 2.79m 15'2" x 9'2"
- Bedroom 3**
2.83m x 2.74m 9'4" x 9'0"
- Kitchen/Dining/Family**
6.25m x 5.64m 20'6" x 18'6"
- Bedroom 4**
3.99m x 3.27m 13'1" x 10'9"
- Total**
1559 sq ft



-  Provision for washing machine C Cupboard
-  Provision for tumble dryer W Wardrobe



01293 225 614
mywoodgate.co.uk

*Window layout does not apply to plots 258, 261, 262, 265, 266, 269 & 280. Floorplans shown are for approximate measurements only. All measurements may vary within a tolerance of 5% and are not intended to be used for carpet or appliance sizes or items of furniture. Furniture layouts are indicative only. Accordingly, due to Thakeham's policy of continuous improvement, the finished product may vary from the information provided. All customers are advised to contact Thakeham to ascertain the availability of any particular property. April 2022.